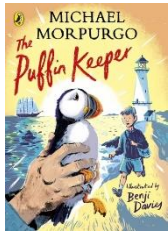


Wrawby St Mary's C of E Primary School

Spring Term 1 2023



Reading

This half term, we will enjoy delving into 'The Puffin Keeper' by Michael Morpurgo. This is a story of a life-changing friendship, a lost puffin, and a lonely artist.

Geography

This term, we consider the question:

'Why do people go to Spain for their holidays?'

Children will become geographers by revisiting their prior knowledge of the 7 continents and being able to locate Spain on a map. Children will deepen their prior learning about the equator and links to climate zones. We will then move onto learning about the human features of a resort within Cleethorpes and a resort within Costa Del Sol. We will then evaluate our knowledge on Spain and answer the question 'Why do people go to Spain for their holidays?'



RE

This half term we will be exploring baptism. We will look at the importance of water and what it symbolises. We will also learn about baptism and the baptism of Jesus.



Computing

This half term, the children will use a range of techniques to create a stop-frame animation using tablets. Next, they will apply those skills to create a story-based animation, adding other types of media such as music and text.

Maths Skills

Throughout this term, children will explore and apply their understanding of:

Geometry – To draw 2-D shapes and identify horizontal and vertical lines and pairs of perpendicular and parallel lines.

Number – recognise the place value of each digit in a three-digit number.

Fractions – recognising tenths, being able to compare and order fractions and to add and subtract fractions with the same denominator.

Addition and subtraction – add and subtract numbers with up to three digits.

To help your child: spend 5 mins a day chanting the 2, 3, 4, 5, 8 and 10 times tables. Also, use the TTRockstars login and move through the levels.

Literacy Skills

Our first piece of writing, this half term, will be a report about Skeletons and Muscles. This links with the science topic we covered in Autumn term 2.

After that, we will be writing another piece of poetry. We will be using 'The Owl and the Pussycat' by Edward Lear as inspiration for our writing.

Science This term, our science focus will be '**Rocks.**'

By the end of this unit of work, we will be able to compare and group together different kinds of rocks based on their appearance and simple physical properties. We will discover how fossils are formed when things that have lived are trapped within a rock. We will be able to recognise that soils are made from rocks and organic matter.

When answering these questions, we will be working scientifically by setting up simple practical enquiries, making careful observations and recording findings.

Art

This half term, we will be using our knowledge of Ancient Egyptians to create, an Egyptian-inspired print. The children will be researching and learning how to print patterns.

PE

Children's designated PE days will be a Tuesday and a Friday.

The children will be taught gymnastics and dance.

Children need to bring their PE kit into school on a Monday and take it home on a Friday. Please ensure all kit is clearly named.